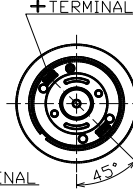
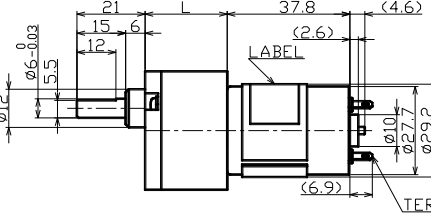
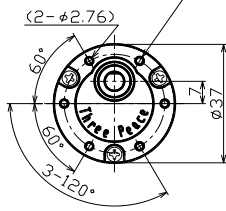


TP-2937-KJ•PJ series [For endurance run]

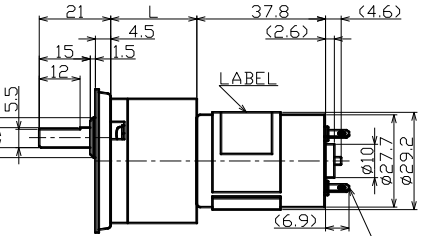
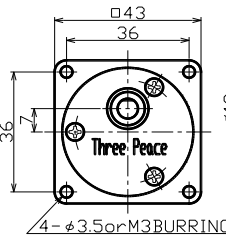
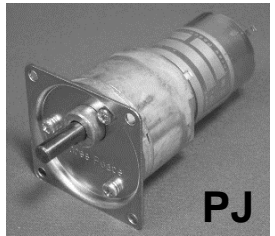
Output[w] **3.9**



4-M3x0.5 TAPPED HOLE
(3.5mmMAX) P.C.D#31



| | |
|--------------|-----------|
| Gear ratio | 1/5~1/900 |
| Torque[mN·m] | 19.6~588 |
| Speed[r/min] | 1,533~9.1 |
| Voltage[V] | 24 |



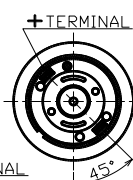
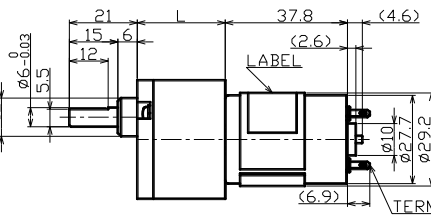
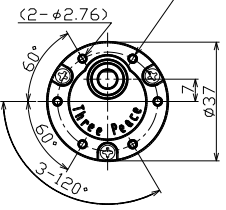
Unit[mm]

TP-2937-KS•PS series [For intermittent operation • Sintering gear]

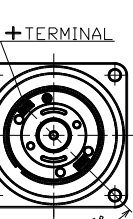
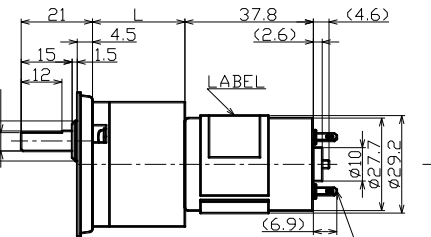
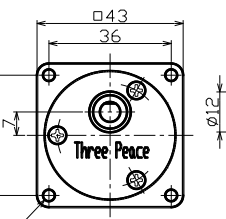
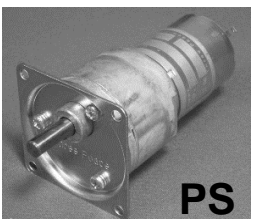
Output[w] **3.9**



4-M3x0.5 TAPPED HOLE
(3.5mmMAX) P.C.D#31



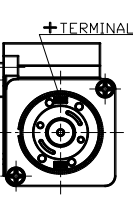
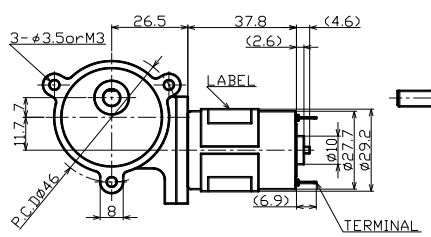
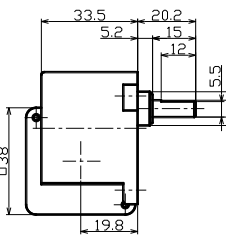
| | |
|--------------|------------|
| Gear ratio | 1/10~1/900 |
| Torque[mN·m] | 39.2~588 |
| Speed[r/min] | 696~9.1 |
| Voltage[V] | 24 |



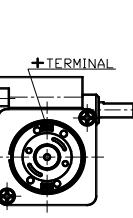
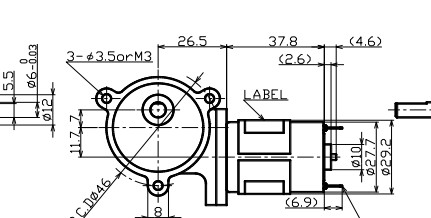
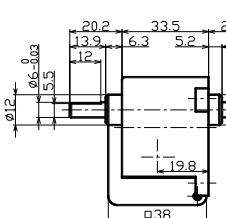
Unit[mm]

TP-2937-KW•KWR series

Output[w] **3.9**



| | |
|--------------|-------------|
| Gear ratio | 1/25~1/1500 |
| Torque[mN·m] | 49~588 |
| Speed[r/min] | 297~5.3 |
| Voltage[V] | 24 |



Unit[mm]