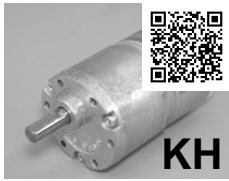
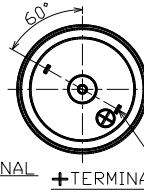
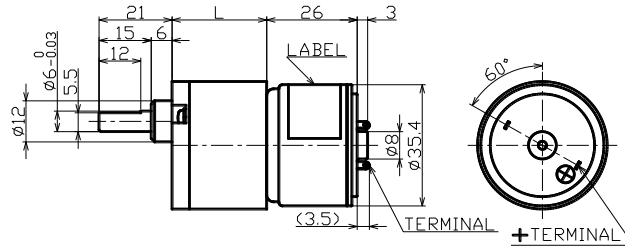
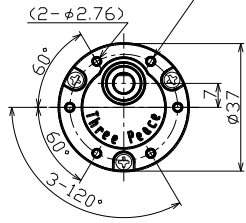


# TP-3526E-KH·PH series [For intermittent operation]

Output(w) **2.4**



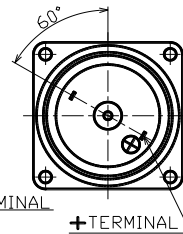
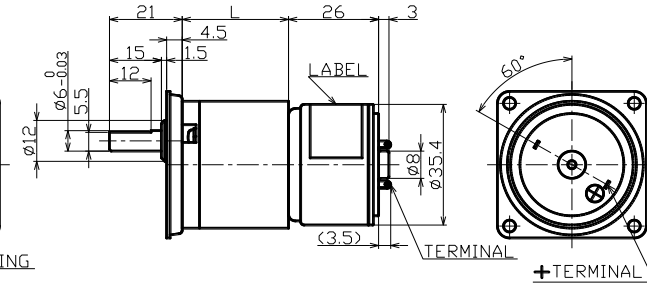
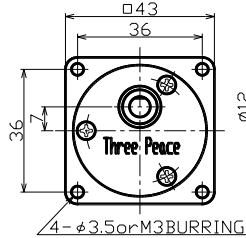
4-M3×0.5 TAPPED HOLE  
(3.5mmMAX) P.C.D#31



Gear ratio	1/5~1/900
Torque[mN·m]	9.8~588
Speed[r/min]	1,251~7.3
Voltage[V]	6



PH



Unit[mm]

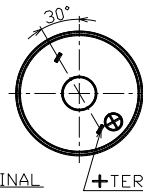
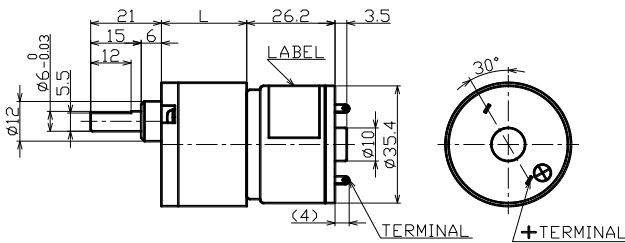
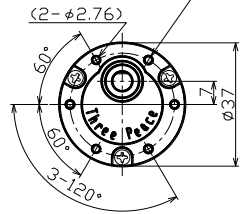
# TP-3526A·B·C·J·KJ·PJ series [For endurance run]

Output(w) **1.4~4.2**

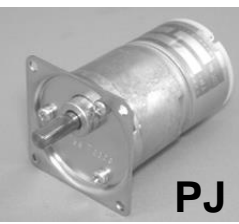


KJ

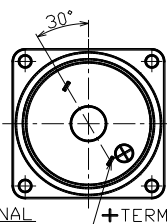
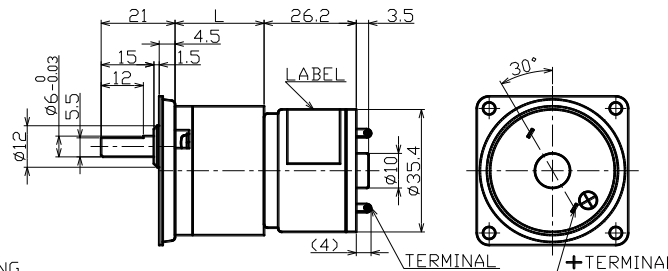
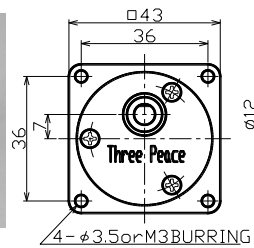
4-M3×0.5 TAPPED HOLE  
(3.5mmMAX) P.C.D#31



Gear ratio	1/5~1/900
Torque[mN·m]	9.8~588
Speed[r/min]	1,639~4.9
Voltage[V]	12 · 24



PJ



Unit[mm]

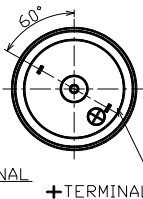
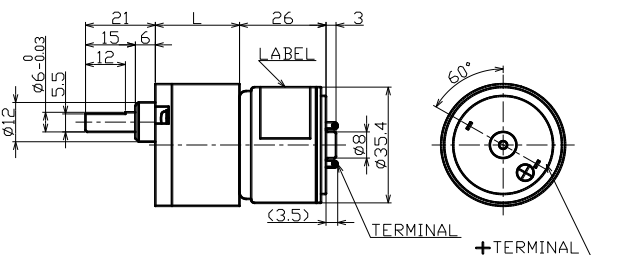
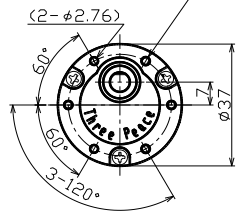
# TP-3526E-KJ·PJ series [For endurance run]

Output(w) **2.4**



KJ

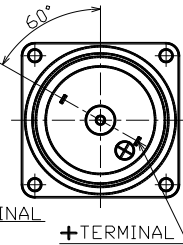
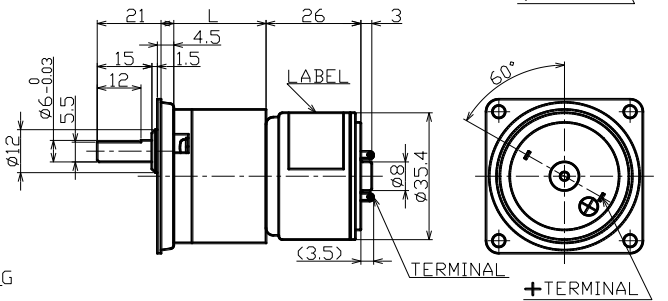
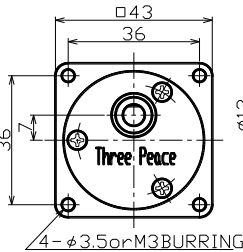
4-M3×0.5 TAPPED HOLE  
(3.5mmMAX) P.C.D#31



Gear ratio	1/5~1/900
Torque[mN·m]	9.8~588
Speed[r/min]	1251~7.3
Voltage[V]	6



PJ



Unit[mm]