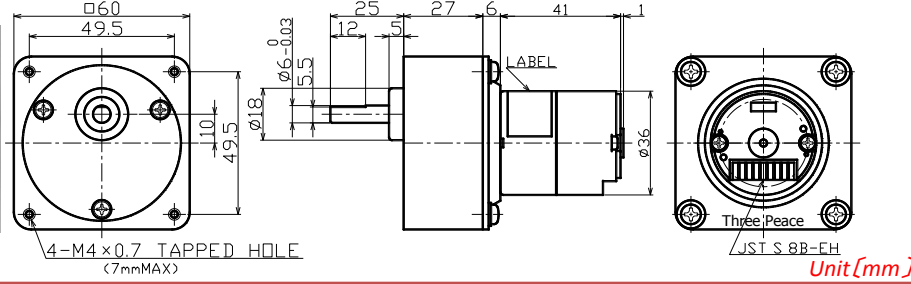


TP-3641-CE series

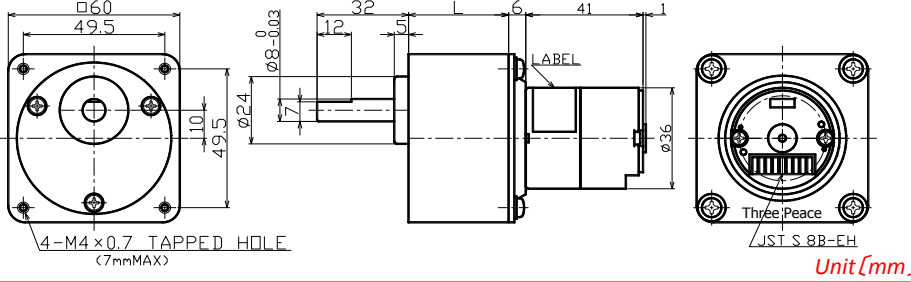
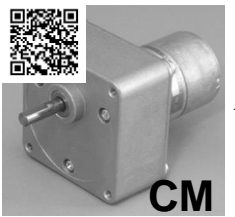
Output[w] **3.9~12**



Gear ratio	1/5~1/1000
Torque[mN·m]	78.4~980
Speed[r/min]	896~2.8
Voltage[V]	12 · 24

TP-3641-CM series

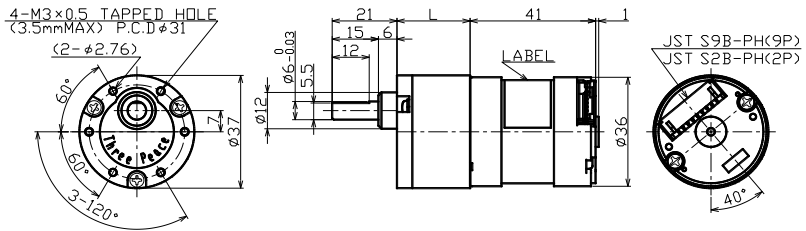
Output[w] **3.9~12**



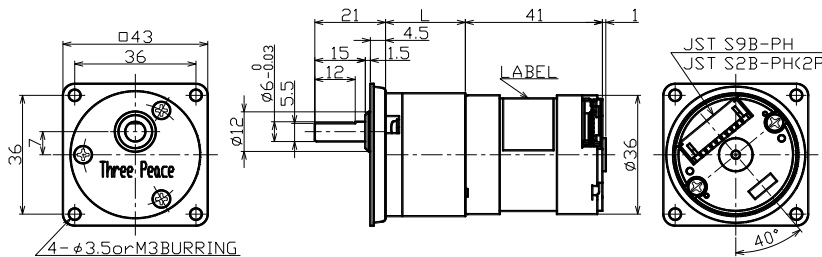
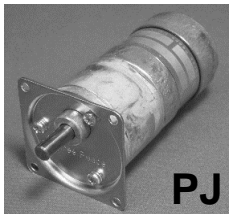
Gear ratio	1/5~1/180
Torque[mN·m]	78.4~2450
Speed[r/min]	896~12.8
Voltage[V]	12 · 24

TP-3641(Built-in driver)-KJ·PJ series [For endurance run]

Output[w] **3.8~12**

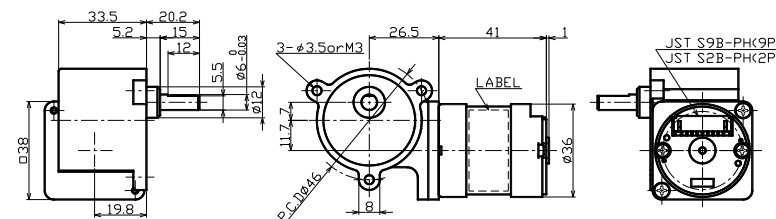
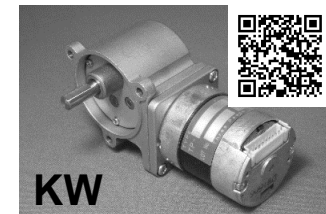


Gear ratio	1/5~1/900
Torque[mN·m]	58.8~588
Speed[r/min]	991.5~3
Voltage[V]	12 · 24

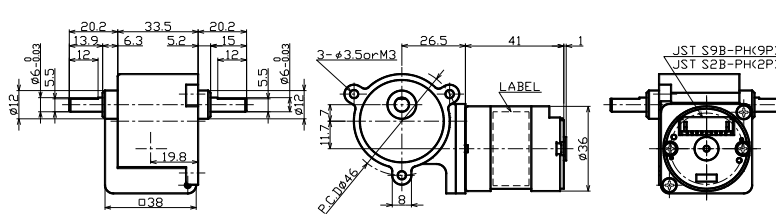


TP-3641(Built-in driver)-KW·KWR series

Output[w] **3.8~12**



Gear ratio	25~1500
Torque[mN·m]	157~588
Speed[r/min]	198~1.8
Voltage[V]	12 · 24



Unit [mm]